



A Food & Beverage Publication

Holiday Events



*Holiday Dinner &
Trolley Ride*

Thursday ~ Dec 9



Candlelight Dinner

Wednesday ~ Dec 15



*Christmas Brunch &
Santa's Gingerbread
Workshop*

Saturday ~ Dec 25

Join us and celebrate the holidays at your Club. We have the season's festivities planned for your family gatherings, office parties, and get-togethers with friends. Each event is unique and promises to provide smiles, entertainment, and a scrumptious meal for guests of all ages. Make reservations now for one, two, or all three events! We wish you a *magical* holiday season and look forward to seeing you this month!

HONOLULU COUNTRY CLUB Celebrates the Season of Giving

Help Hawai'i's families enjoy a
MAGICAL holiday season!

You can make a difference!

*Join us in supporting families who find themselves in
difficult circumstances. At each upcoming holiday
special event:*

- * *Thanksgiving Dinner*
- * *Holiday Dinner & Trolley Ride*
- * *Candlelight Dinner*
- * *Christmas Brunch*

*we will be collecting
canned goods and non-
perishable foods to
celebrate the
season of giving.*

All donations will be given to the Hawai'i Food Bank,
a beneficiary of the Honolulu Country Club Foundation



Honolulu
Country Club
isn't just for
golf anymore!



Reach Me @:

1690 Ala Pu'umalu
Honolulu, HI 96818

Phone:
808-441-9414

eMail:
erodrigues@honolulu
countryclub.com

We're on the Web!

Find us at:

www.honolulucountryclub.com

Click on the

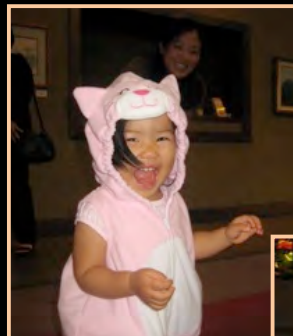
"For Your Palate" link

for Upcoming Special Event
Menus, Online Newsletters, a
Photo Gallery, Recipes, and
Video Demonstrations



Elden Rodrigues
Executive Chef

Fabulous Fall Family Festival & B-I-N-G-O



Thanks to you, our supportive and gracious Members, we had a great evening at the Fall Family Festival & B-I-N-G-O. Your participation in the activities reflecting our **"Reduce, Reuse, Recycle, Rethink"** theme (Farmer's Market & Pumpkin Patch) was overwhelming.

You brought in cans and bottles for recycling, which added up to \$26. Our **Celebration of the Season of Giving** was off to an amazing start with overflowing baskets of donations for the Hawai'i Food Bank, which will be delivered after Christmas Day along with the \$\$ earned from recycling!

If you look at the photo above, some of our keiki got in the spirit by "disguising" their recyclables as pumpkins! Very clever! Our thanks for helping extend the HCC Pumpkin Patch to the collection table! ☺

We loved seeing many of you dressed in your costumes and hope you thoroughly enjoyed the evening. It was rewarding to see you having fun, winning prizes, and consuming a tasty meal. For a complete album of all photos for the evening, log onto our link on the HCC website (address at left).